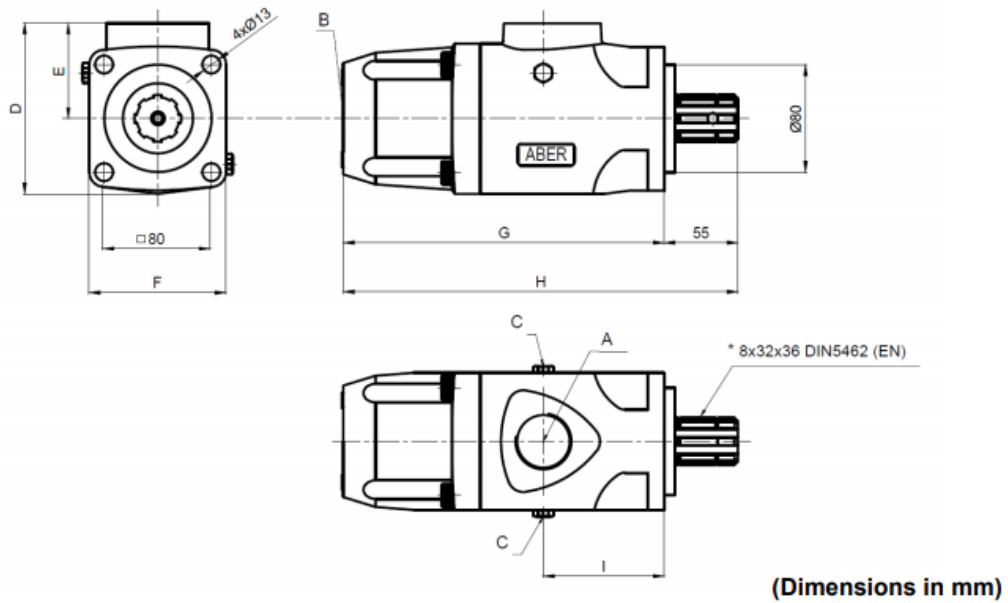


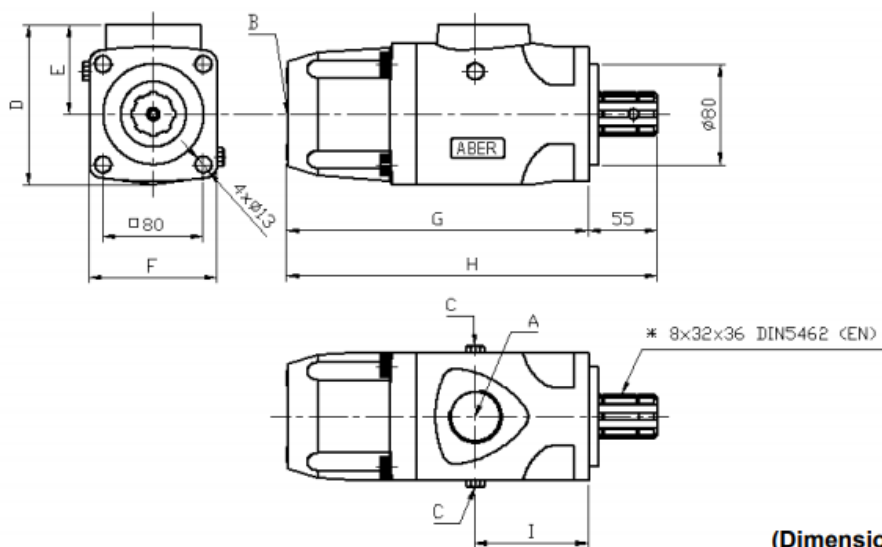
Main Dimensions



Main Data

Pumps BHZ_EN	25319	25419	25519	25619	25716	25719	25916
Cylinder capacity (cm ³ /Rot.)	32	40	50	60	70	80	110
Output at max. rotation (l/min)	48	60	75	90	105	96	132
Operating pressure (bar) (up to)	250	250	250	250	250	250	250
Peak pressure (bar)	320	320	320	320	320	320	320
Rotation min. (rpm)	200	200	200	200	200	200	200
Rotation máx. (rpm)	1500	1500	1500	1500	1500	1200	1200
Weight (kg)	12	12	13	13	16	16	21,5
Sense of Rotation	Bi-directional						
A-Oil inlet (BSP)	1"1/4	1"1/4	1"1/4	1"1/4	1"1/2	1"1/2	1"1/2
B-Oil Outlet (BSP)	3/4"	3/4"	3/4"	3/4"	1"	1"	1"
C	Oil drain plug						
D	125	125	125	125	148	148	152
E	69	69	69	69	72	72	80
F	102	102	102	102	118	118	142
G	240	240	240	240	259	259	270
H	295	295	295	295	314	314	325
I	90	90	90	90	118	118	134

Main Dimensions

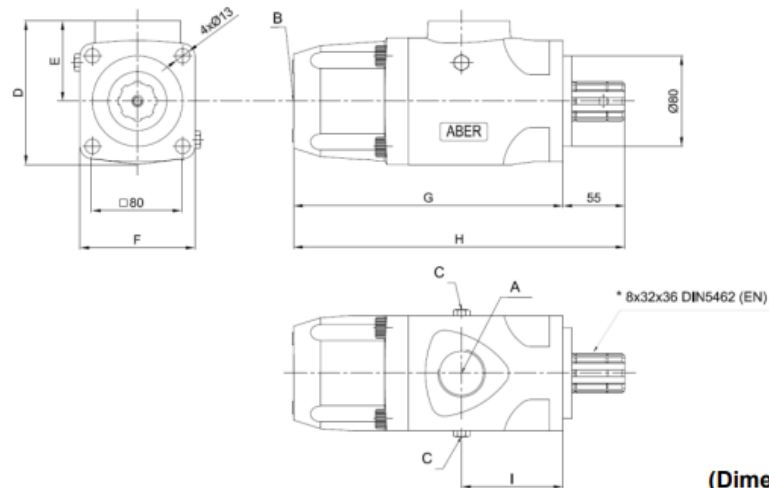


(Dimensions in mm)

Main Data

Pumps BHT_EN	25519	25619	22819
Cylinder capacity (cm ³ /rot.)	50	60	80
Output at max. rotation (l/min)	75	90	108
Operating pressure (bar) (up to)	320	320	320
Peak pressure (bar)	370	370	370
Rotation Min. (rpm)	200	200	200
Rotation Máx. (rpm)	1500	1500	1350
Weight (kg)	13	13	16
Sense of Rotation	Bi-directional		
A-Oil inlet (BSP)	1"1/4	1"1/4	1"1/2
B-Oil Outlet (BSP)	3/4"	3/4"	1"
C	Oil drain plug		
D	125	125	148
E	69	69	72
F	102	102	118
G	240	240	259
H	295	295	314
I	90	90	118

Main Dimensions



(Dimensions in mm)

Main Data

Pumps BHV_EN	21313	21316	21416	21516	21616	21716	21816	211113	25913
Cylinder capacity (cm ³ /rot.)	14	19	25	32	40	45	60	80	86
Output at max. rotation (l/min)	35	38	50	64	80	90	96	128	129
Operating pressure (bar) (up to)	350	320	320	320	320	320	400	400	320
Peak pressure (bar)	400	370	370	370	370	370	450	450	370
Rotation mín. (rpm)	200	200	200	200	200	200	200	200	200
Rotation máx. (rpm)	2500	2000	2000	2000	2000	2000	1600	1600	1500
Weight (kg)	12.0	12.0	12.0	12.0	12.0	12.0	16.0	21.5	21.5
Sense of Rotation	Bi-directional								
A-Oil inlet (BSP)	1"1/4	1"1/4	1"1/4	1"1/4	1"1/4	1"1/4	1"1/2	1"1/2	1"1/2
B-Oil Outlet (BSP)	3/4"	3/4"	3/4"	3/4"	3/4"	3/4"	1"	1"	1"
C	Oil drain plug								
D	125	125	125	125	125	125	148	152	152
E	69	69	69	69	69	69	72	80	80
F	102	102	102	102	102	102	118	142	142
G	240	240	240	240	240	240	259	270	270
H	295	295	295	295	295	295	314	325	325
I	90	90	90	90	90	90	118	134	134