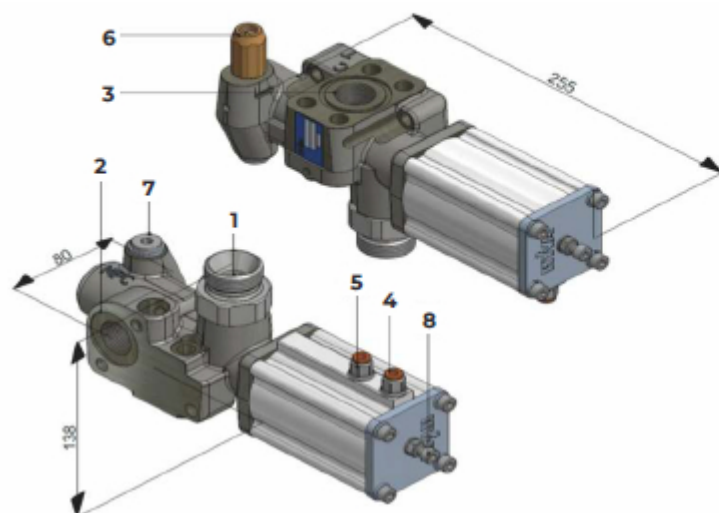


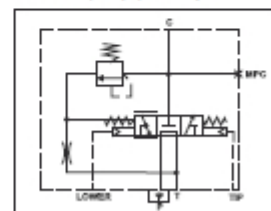
For direct mounting on

- TNK: Hyva tank mounting plate
- SAE: SAE inlet of Hyva cylinder



- 1 P Pump connection
- 2 T Tank connection
- 3 C Cylinder connection SAE
- 4 Pneumatic connection (Tip) 6 mm
- 5 Pneumatic connection (Lower) 6 mm
- 6 Pressure relief cartridge
- 7 MPC Measure Pressure Cylinder (Pressure gauge point)
- 8 Adjustment screw (int.hex. 5) (To adjust the lowering speed)

HYDRAULIC SYMBOL



SAFETY:

HT valve fitted on cylinder (SAE) port provides hose burst safety function

HT1150-P3/4" - TNK/SAE



HT1150-P1" - TNK/SAE

