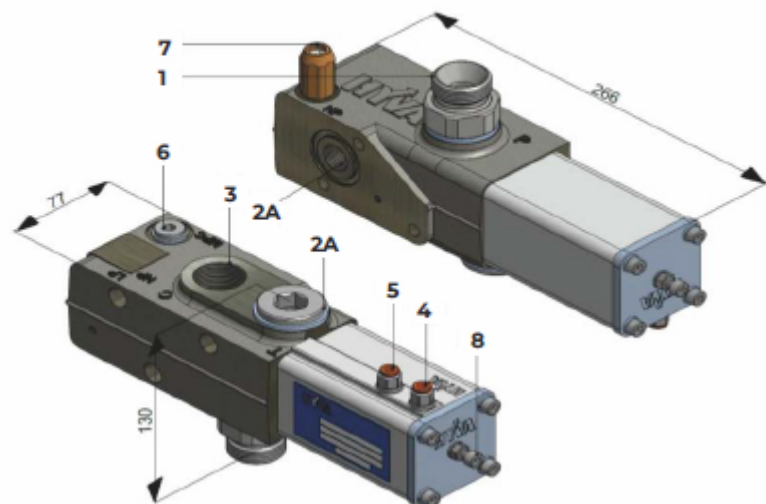
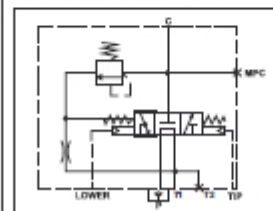


For direct mounting on
 • TNK: Hyva tank mounting plate



- 1 P Pump connection
- 2A T1 Tank connection
- 2B T2 Alternative tank connection
- 3 C Cylinder connection
- 4 Pneumatic connection (Tip) 6 mm
- 5 Pneumatic connection (Lower) 6 mm
- 6 MPC Measure Pressure Cylinder (Pressure gauge point)
- 7 Pressure relief cartridge
- 8 Adjustment screw (in hex. 5) (To adjust the lowering speed)

HYDRAULIC SYMBOL



SAFETY:

HT valve fitted on cylinder (SAE) port provides hose burst safety function

